

欢迎

WELCOME

WILLKOMMEN

Bienvenue

Bienvenido

Benvenuto

いらっしやいませ

Boas-vindas

مرحباً

환영

歡迎

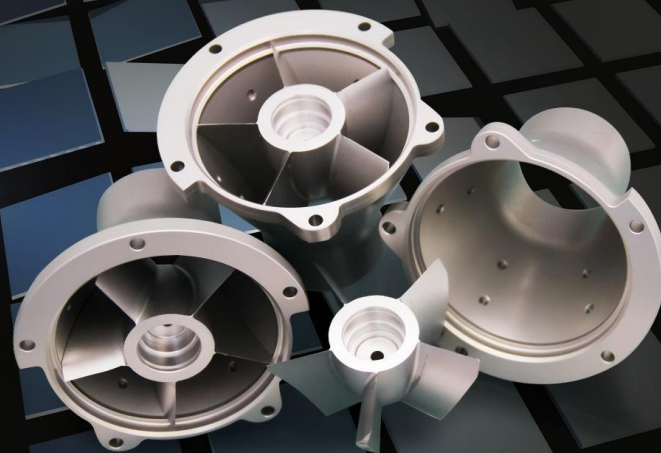
专注于CNC数控车铣加工

Focus on CNC Machining Parts

高品质
High Quality



高精度
High Precision





Shenzhen Promostar Hardware Co., Ltd is a leading manufacturer and supplier of high-quality precision custom made mechanical parts, specializing in the design, development, and production of cnc machining parts for a wide range of industries. Such as ***Luxury Car Internal decoration components, Luxury fashion metal accessories, Luxury Audio System equipment mechanical parts, High precision Sensor Housing, High quality CCD Camera housing, High precision semiconductor mechanical parts, Medical equipment machining parts***, and so on. With a strong focus on innovation, quality, and customer satisfaction, Promostar has established itself as a trusted partner for businesses worldwide.

- 1. Precision Engineering**
- 2. Custom Solutions**
- 3. Advanced Manufacturing**
- 4. Quality Assurance**



Mission: To provide innovative, high-quality hardware solutions that empower our customers to achieve their goals.

Vision: To be a global leader in precision hardware manufacturing, recognized for excellence in engineering, quality, and customer satisfaction.

2013

Promostar registered at HONGKONG as a Trading Company.

2015

Promostar Registered at ShenZhen and has it's own's production.

2016

Promostar combined with HONGZHI Industrie GmbH Germany.

2023

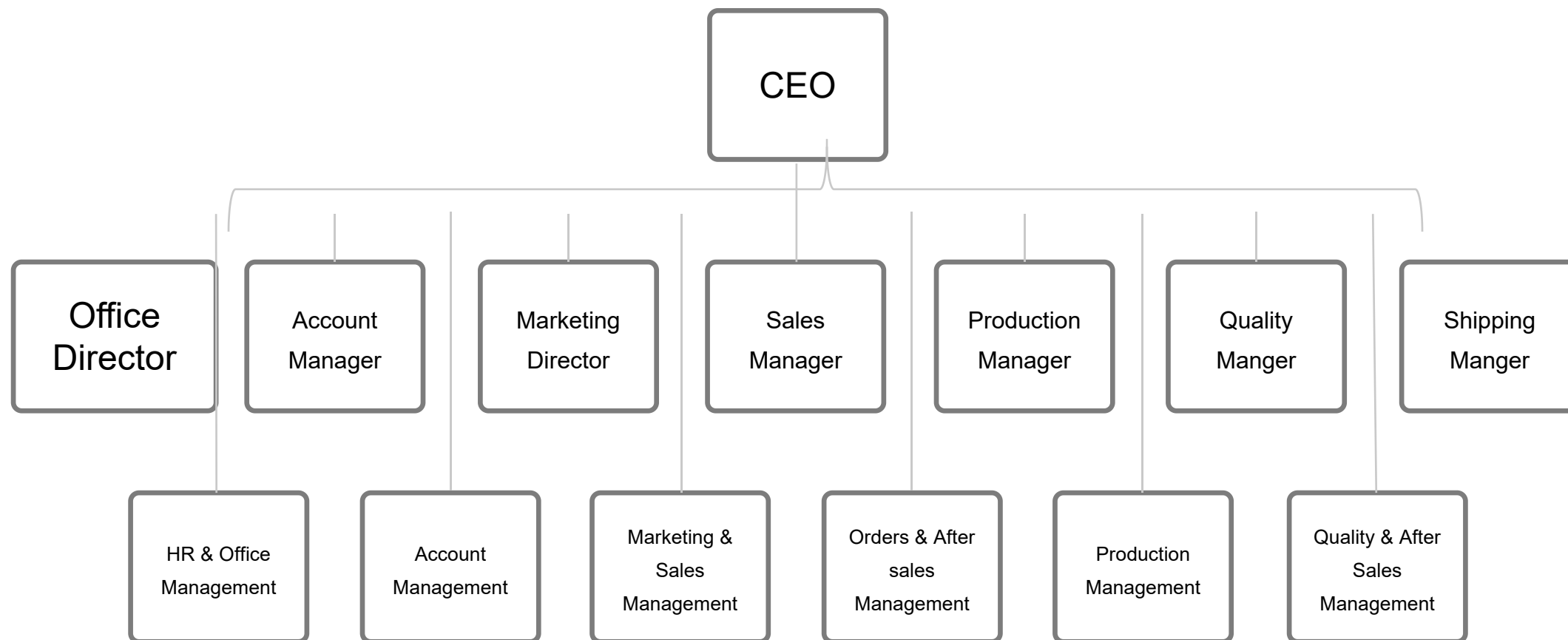
Promostar starts to work in Automotive Industry.

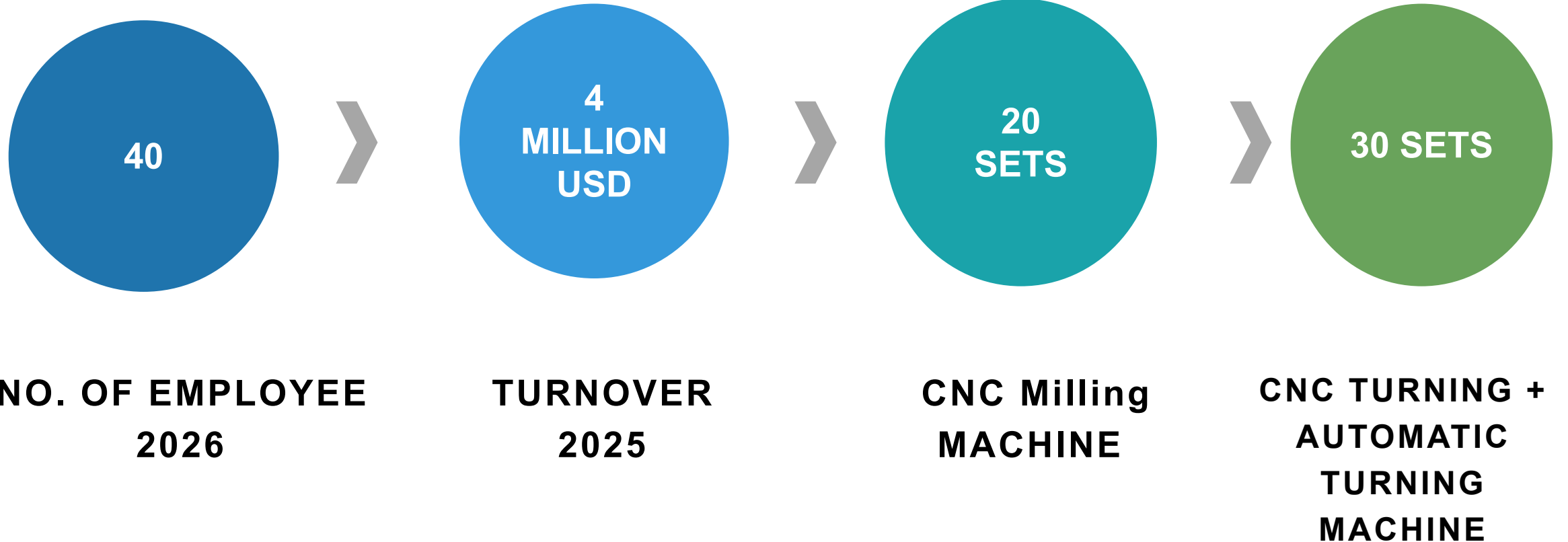
2026

Promostar starts to work in Luxury Industries.

Organizational Structure

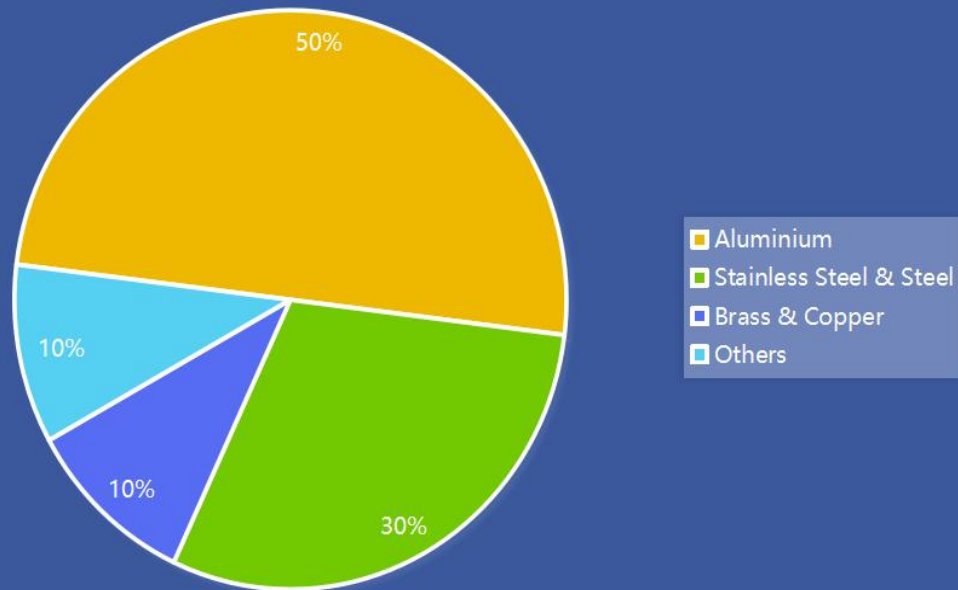
组织架构图



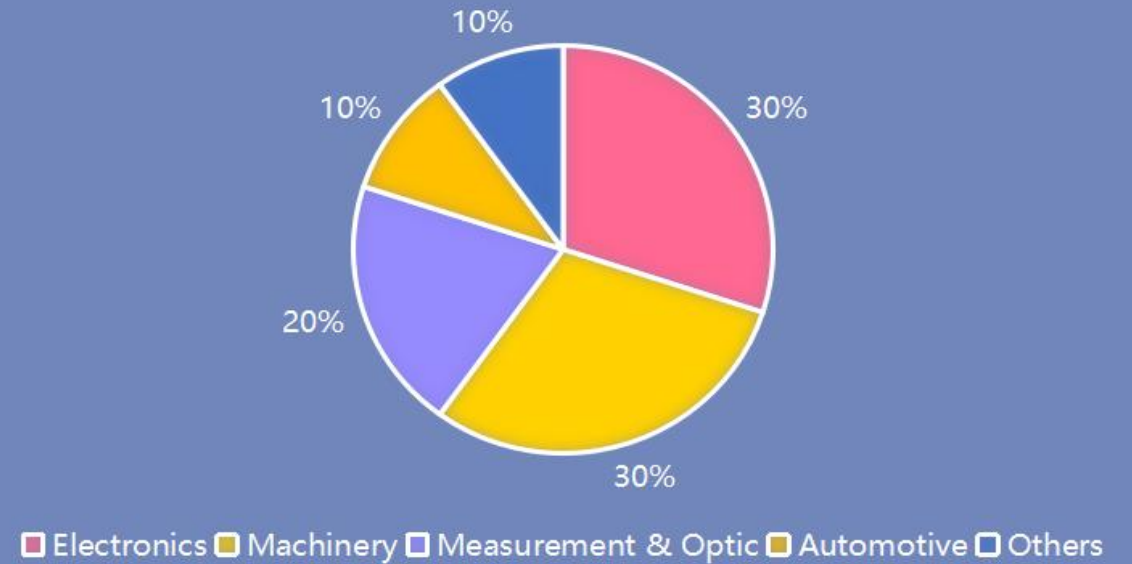
LATEST DATA DISPLAY

CNC MACHINING, CNC TURNING, AUTOMATIC TURNING

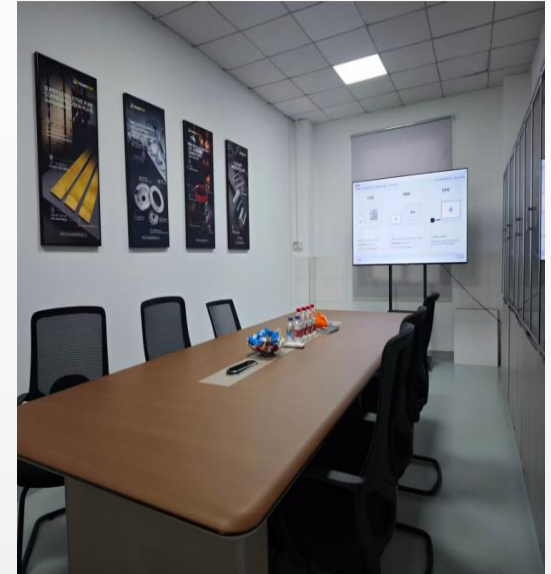
MATERIAL IN CAPACITY



APPLICATION FIELD



Company Overview

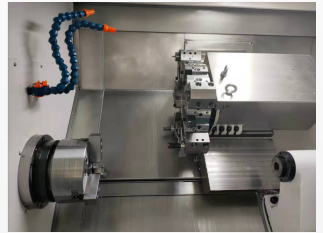


Company Overview



Workshop & Equipment

CNC TURNING MACHINING



Workshop&Equipment

CNC TURNING MACHINING



技术参数

3500r/min到达时间1S,刹车时间小于1S

型号		CFG46/CZG46	CFG56/CZG56
NC	宝元/新代/KND	5800 / 21TA / 1100	
加工能力	主轴通孔直径	∅56mm	∅66mm
	最大棒料直径	∅45mm	∅51mm
	最大回转直径	∅350mm	∅350mm
	最大加工长度	100mm	100mm
	X轴最大行程	720mm	720mm
	Z轴最大行程	280mm	280mm
	X/Z轴最快移动速度	30m/min	30m/min
	重复定位精度	0.005mm	0.005mm
	中心高	60mm	60mm
电机	异步伺服电机	5.5kw	7.5kw
	主轴最高转速	5000r/min	4000r/min
	X轴伺服电机	850W	1300W
	Z轴伺服电机	850W	1300W
刀具	排刀数	5-10	
	动力刀具	无	
	机床总功率	9kw	13kw

Workshop&Equipment

CNC TURNING MACHINING

技术参数

3500r/min到达时间1S,刹车时间小于1S

型号	CB46DW	CB56DW	CL46DW	CL56DW	
NC	宝元/新代/KND				
	5800 / 21TA / 1100				
加工能力	最大棒料直径	∅45mm	∅51mm	∅45mm	∅51mm
	最大回转直径	∅350mm	∅350mm	∅350mm	∅350mm
	最大加工长度	350mm	350mm	550mm	550mm
	X轴最大行程	250mm	250mm	250mm	250mm
	Z轴最大行程	380mm	380mm	580mm	580mm
	X/Z轴最快移动速度	30m/min	30m/min	30m/min	30m/min
	重复定位精度	0.005mm	0.005mm	0.005mm	0.005mm
马达	异步伺服电机	7.5kw	11kw	7.5kw	11kw
	主轴最高转速	4500r/min	3000r/min	4500r/min	3000r/min
	X轴伺服电机	1300W	1300W	1300W	1300W
	Z轴伺服电机	1300W	1300W	1300W	1300W
刀具	刀塔刀具数	8-12	8-12	8-12	8-12
尾座	尾座行程	380	380	580	580
	顶针锥度	MT4	MT4	MT4	MT4
	尾座轴径	∅72	∅72	∅72	∅72
其它	机床总功率	12kw	14kw	12kw	14kw
	机床尺寸	2300X1650X1800	2300X1650X1800	2580X1739X1945	2580X1739X1945
	机床重量	4300kg	4500kg	5000kg	5000kg

捷程数控
JSWAY

长行程刀塔尾座CNC车床



强化耐久无风扇设计
增强抗油耐屑的能力



Workshop & Equipment

CNC MILLING MACHINING



Workshop&Equipment

CNC MILLING MACHINING T-856S



2.1、基本参数

名 称		单 位	参 数	备 注
加工范围	工作台行程(X轴)	mm	800	
	滑鞍行程(Y轴)	mm	550	
	主轴箱行程(Z轴)	mm	600	
	主轴端面到工作台面距离	mm	125~725	
	主轴中心至立柱导轨面距	mm	590	
工作台	工作台尺寸	mm	1000*500	
	工作台承重	Kg	500	
	T型槽(槽数-槽宽*间距)	mm	5-18*100	
主轴	电机功率(额定/短时)	kw	7.5/11	
	电机扭矩(额定/短时)	N.m	35.8/95.5	
	转速范围	r/min	50~12000(直联)	
	主轴直径	mm	φ150	
	刀柄规格	/	BT40	
	拉钉规格	/	P40T-I(MAS403)	
导轨	X轴	mm	2-35滚柱	
	Y轴	mm	2-45滚柱	
	Z轴	mm	2-45滚柱	

Workshop&Equipment

CNC MILLING MACHINING T600SE



名 称		单 位	参 数	备 注
加工范围	工作台行程(X轴)	mm	600	
	滑鞍行程(Y轴)	mm	400	
	主轴箱行程(Z轴)	mm	320	
	主轴鼻端到工作台面距离	mm	140-460	
	主轴中心至立柱导轨面距离	mm	445	
工作台	工作台尺寸	mm	700*400	
	工作台承重(均匀承重)	Kg	250	
	T型槽(槽数-槽宽*间距)	mm	3-18*125	
主轴	电机功率(额定/短时)	kW	3.7/5.5	
	电机扭矩(额定/短时)	N.m	14.1/21	
	主轴电机转速	rpm	20-20000	
	主轴直径	mm	Φ100	
	主轴锥度	/	BT30	
导轨	X轴导轨规格	/	25	
	Y轴导轨规格	/	30	
	Z轴导轨规格	/	35	
驱动	丝杠规格 X、Y、Z	mm	X:25 Y:25 Z:32	
	电机功率 X/Y/Z	kw	1.5/1.5/2.2	
速度	切削进给速度范围	mm/min	1-30000	
	X/Y/Z轴快移速度	m/min	48/48/48	
机床精度	定位精度(X/Y/Z)	mm	0.006	GB/T 18400.4 (全行程)
	重复定位精度(X/Y/Z)	mm	0.004	

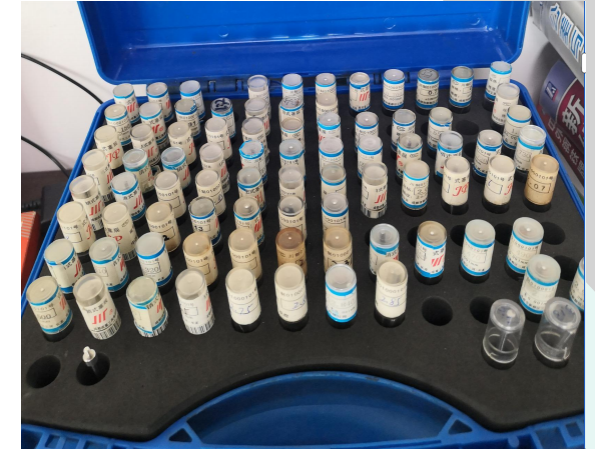
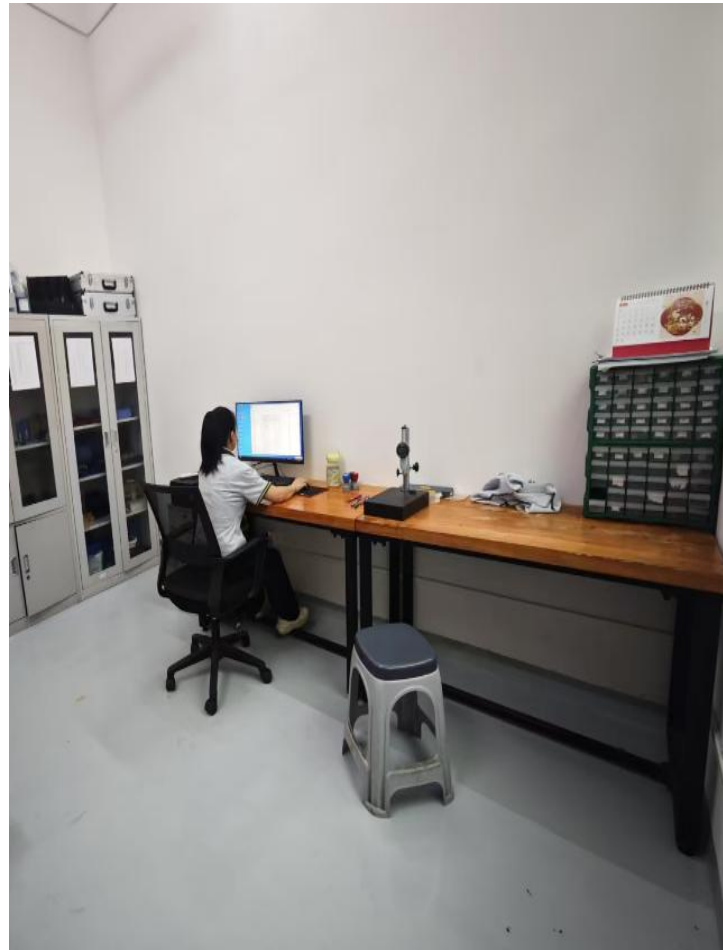
Workshop&Equipment

CNC MILLING MACHINING T-500SE

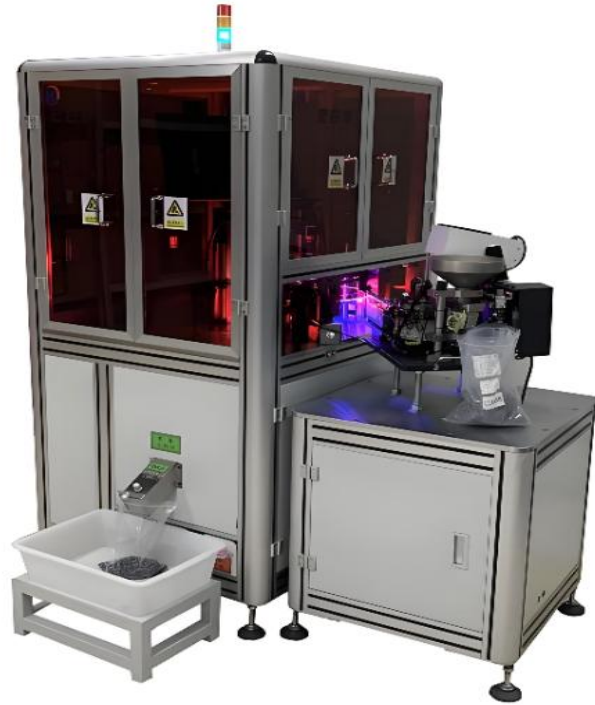


名 称		单 位	参 数	备 注
加工范围	工作台行程(X轴)	mm	500	
	滑鞍行程(Y轴)	mm	400	
	主轴箱行程(Z轴)	mm	320	
	主轴鼻端到工作台面距离	mm	180-500	
	主轴中心至立柱导轨面距离	mm	445	
	工作台尺寸	mm	620*400	
工作台	工作台承重(均匀承重)	Kg	250	
	T型槽(槽数-槽宽*间距)	mm	3-14*120	
	电机功率(额定/短时)	kW	3.7/5.5	
主轴	电机扭矩(额定/短时)	N.m	14.1/21	
	主轴电机转速	rpm	20-20000	
	主轴直径	mm	Φ100	
	主轴锥度	/	BT30	
	X轴导轨规格	/	25	
导轨	Y轴导轨规格	/	30	
	Z轴导轨规格	/	35	
	丝杠规格 X、Y、Z	mm	X:25 Y:25 Z:32	
驱动	电机功率 X/Y/Z	kw	1.5/1.5/2.2	
	切进给速度范围	mm/min	1-30000	
速度	X/Y/Z 轴快移速度	m/min	48/48/48	
	定位精度(X/Y/Z)	mm	0.006	GB/T 18400.4
机床精度	重复定位精度(X/Y/Z)	mm	0.004	(全行程)

Quality Checking Equipment



Quality Checking Equipment




Quality Checking Equipment



CERTIFICATIONS

ISO 9001



Quality Management System Certificate

Certificate No. : 04924Q00985R2S

We hereby certify that

Shen Zhen Promostar Hardware Co., Ltd

Unified Social Credit Code: 91440300MA5EHP6J3C

Address: No. 11, 1st Floor, Zhu Gushi Chunyang Industrial Park Longgang Street, Longgang District, Shenzhen City, Guangdong Province, P.R. China

by reason of its Quality Management System has been awarded this certificate for compliance with the standard



GB/T 19001-2016 / ISO 9001:2015



Applies in the following area:

Manufacture, sales of hardware products (precision hardware accessories)

Initial date: 2018-07-06
New issued date: 2025-08-20
Term of validity of this certificate: 2024-06-24 to 2027-06-23


The scope of this certificate only includes the premises listed in the certificate. If it involves administrative licensing pre-approval or mandatory certification, the scope of this certificate only covers products and services within the scope of the licensing qualification and the mandatory certification. During the validity period of the certificate, the certified organization must be subjected to regular supervision and review, and only if the review is positive can this certificate be validated. The related information of this certificate can be searched on the portal of Guangdong Quality Testing CTC Certification Co., Ltd. (<https://www.qctc.org>) and the CNCA (<http://cncacnca.cn>), or by scanning the QR code below for inquiries.

中国认可
国际互认
管理体系
MANAGEMENT SYSTEM
CNAS C049-M

John Yue
Chairman



Guangdong Quality Testing CTC Certification Co., Ltd.

No. 10 Science Avenue, Huangpu District, Guangzhou, Guangdong, P. R. China
Tel: 020-89232333 <https://www.qctc.org>



ROHS



Query URLs:
<http://www.sst-test.com>
Security Code: 4155361866



TEST REPORT

No.: SST19006814 Date.: 2019-12-13 Page 1 of 7

Applicant: ShenZhen Promostar Hardware Co.,Ltd
Address: 3F, 243 Nanlian Botanical Garden Road, Longgang District, Shenzhen
Report on the submitted sample said to be:
Material description: PL36.001.14-05

Style/ Model No.:	N/A	P/O No./ Lot No.:	N/A
Order No.:	N/A	Material:	Aluminum alloy
Color:	N/A	Test Request Age:	N/A
Manufactory:	N/A	Buyer:	N/A
Country of Origin:	N/A	Country of Export:	N/A

Sample received date: December 11, 2019
Sample test period: From December 11, 2019 to December 13, 2019

SUMMARY OF TEST RESULT(S)


Testing Item	Conclusion	Remark
Heavy Metals, Flame Retardants Content and Phthalates content – European Council Directive 2011/65/EU and Change-Directive (EU) 2015/863 on the Restriction of the Use of Certain Hazardous Substances in Electrical and Electronic Equipment (RoHS)	PASS	-

*****FOR FURTHER DETAILS, PLEASE REFER TO THE FOLLOWING PAGE(S)*****

Signatories:

John Yue
John Yue
Lab Manager



 **Hotline: 0769-85584050**
Sharp Standard Testing Technology Co., Ltd

No.42 HouJie Road East, HouJie Town, DongGuan, Guangdong,China
Mail: ssst@sst-test.com Tel: 86-769-85584050 <http://www.sst-test.com>

REACH



Query URLs:
<http://www.sst-test.com>
Security Code: 4081718406



TEST REPORT

No.: SST20000523-1 Date.: 2020-03-16 Page 1 of 17

Applicant: ShenZhen Promostar Hardware Co.,Ltd
Address: 3F,243 Nanlian Botanical Garden Road, Longgang District, Shenzhen
Report on the submitted sample said to be:
Material description: S.S 304

Style/ Model No.:	VEGADISS	P/O No./ Lot No.:	N/A
Order No.:	N/A	Material:	N/A
Color:	Natural	Test Request Age:	N/A
Manufactory:	N/A	Buyer:	N/A
Country of Origin:	N/A	Country of Export:	N/A

Sample received date: March 13, 2020
Sample test period: From March 13, 2020 to March 16, 2020

SUMMARY OF TEST RESULT(S)

Test Item(s)	Conclusion	Remark
Screening of 205 Substances of Very High Concern (SVHC). Based on the list published by European Chemicals Agency (ECHA) public consultation, regarding Regulation (EC) No. 1907/2006 concerning the REACH	PASS	-

*****FOR FURTHER DETAILS, PLEASE REFER TO THE FOLLOWING PAGE(S)*****

Signatories:

John Yue
John Yue
Lab Manager



 **Hotline: 0769-85584050**
Sharp Standard Testing Technology Co., Ltd

No.42 HouJie Road East, HouJie Town, DongGuan, Guangdong,China
Mail: ssst@sst-test.com Tel: 86-769-85584050 <http://www.sst-test.com>

Product



铝合金精密传感器腔体

Aluminium CNC Machined Sensor Housing

硬质氧化黑色
Black hard Anodize



应用 / Application

传感器腔体
Sensor Housing

公差
Tolerance ISO2768-mk

高要求品质
High Quality Product

<https://www.pshardware.com>



黄铜CUZN39PB3 CNC 数控车铣加工零件

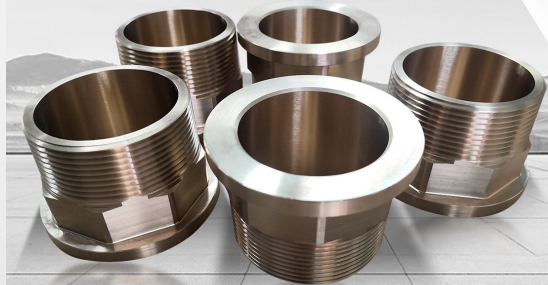
Brass CuZn39Pb3 CNC Turning and Milling component

应用 / Application

泵阀连接件
Pump & Valve

高要求品质
High Quality Product

公差
Tolerance ISO2768-mk



表面处理: 光滑无毛刺
Surface Treatment: Deburr Ra1.6

<https://www.pshardware.com>

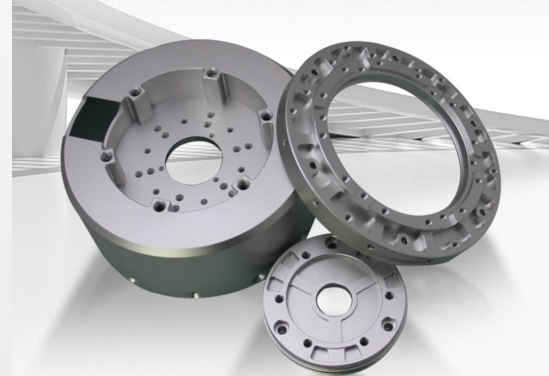


铝合金CNC车铣 零件加工

Aluminium CNC Turning & Milling Part

表面处理: 喷砂氧化本色

Surface Treatment: Bead Blasting & Natural Anodize



应用 / Application

传感器
Sensor

高要求品质
High Quality Product

公差
Tolerance ISO2768-mk

<https://www.pshardware.com>



材料Material: Alu7082-T6

CNC加工自行车刹车碟

Aluminium CNC Milling Bicycle Brake Disc



表面处理: 光滑无毛刺
Surface Treatment: Deburr Ra1.6

应用 / Application

电动自行车
Electric Bicycle

高要求品质
High Quality Product

公差
Tolerance ISO2768-mk

<https://www.pshardware.com>

Product

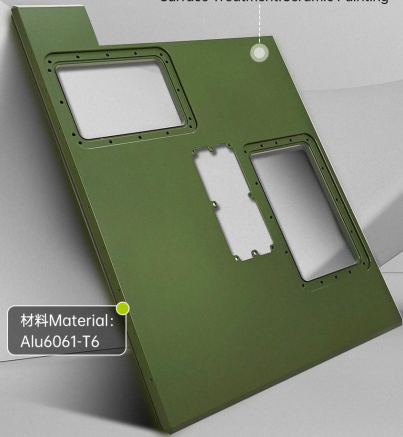


高品质 High Quality 高精度 High Precision

铝合金CNC数控加工 连接面板

Aluminium CNC Milling Connect Plate

表面处理: 陶瓷喷油
Surface Treatment: Ceramic Painting



材料Material:
Alu6061-T6

应用/ Application

电子设备
Electronic Equipment

高要求品质
High Quality Product

定制加工
Custom Made

公差
Tolerance ISO2768-mk

<https://www.pshardware.com>

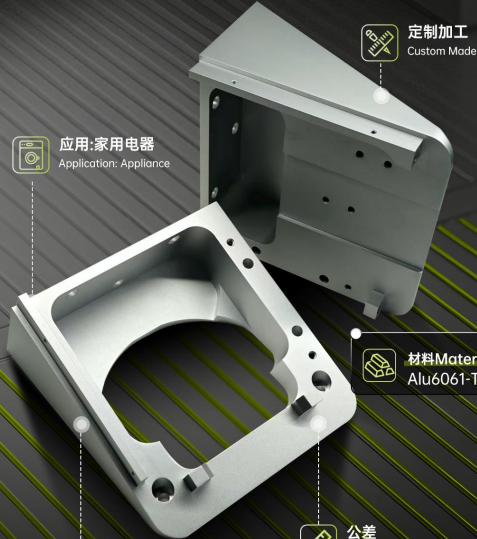


高品质 High Quality 高精度 High Precision

5轴铝合金 CNC数控加工腔体

5 Axis Precision Aluminium CNC Machining Housing

表面处理: 本色氧化
Surface Treatment: Natural Anodize



应用: 家用电器
Application: Appliance

定制加工
Custom Made

材料Material:
Alu6061-T6

高要求品质
High Quality Product

公差
Tolerance ISO2768-mk

<https://www.pshardware.com>



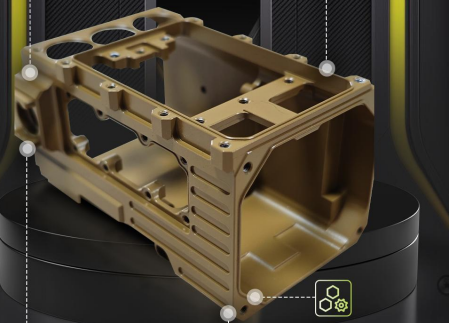
高品质 High Quality 高精度 High Precision

铝合金CNC数控加工腔体 Aluminium CNC Milling Housing

材料Material:
Alu6061-T6

应用: 数码相机
Application: Digital Camera

定制加工
Custom Made



高要求品质
High Quality Product

表面处理: 陶瓷喷油
Surface Treatment

公差
Tolerance ISO2768-mk

<https://www.pshardware.com>



高品质 High Quality 高精度 High Precision

铝合金CNC数控加工腔体

Precision Aluminium CNC Machining Housing

表面处理: 黑色氧化
Surface Treatment: Black Anodize



应用: 自动化设备
Application: Automation

定制加工
Custom Made

材料Material:
Alu6061-T6

高要求品质
High Quality Product

公差
Tolerance ISO2768-mk

<https://www.pshardware.com>

Product



不锈钢数控车铣 零件加工

Stainless Steel CNC Turning and Milling Part



应用:食品与饮料设备
Application: Food & Beverage Equipment



定制加工
Custom Made



高要求品质
High Quality Product



公差
Tolerance ISO2768-mk

表面处理: 光滑无毛刺Ra1.6
Surface Treatment: Deburr Ra1.6

材料Material
SUS316L

<https://www.pshardware.com>



钛合金CNC数控车铣零件加工 Titanium CNC Turned Part

材料Material

Titanium TA2



应用:电子设备
Application: Electronic Equipment



定制加工
Custom Made



表面处理
光滑无毛刺Ra1.6
Surface Treatment: Deburr



高要求品质
High Quality Product



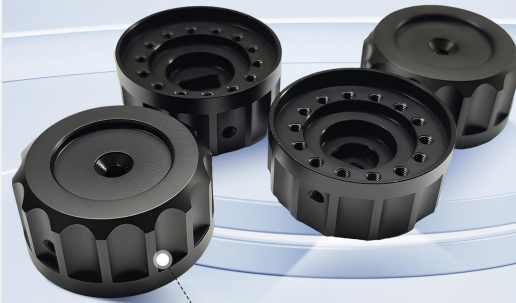
公差
Tolerance ISO2768-mk

<https://www.pshardware.com>



铝合金CNC 车铣复合旋钮

Aluminium CNC machined Knob



表面处理
氧化黑色
Black Anodize

<https://www.pshardware.com>



铝合金 CNC数控车灯饰外壳

Aluminium CNC Turning Light Housing

应用/Application

灯饰

Lighting

高要求品质

High Quality Product

公差

Tolerance ISO2768-mk



表面处理: 喷砂氧化金色/粉色/其他
Surface Treatment: Bead Blasting Gold / Pink / Other Anodize

<https://www.pshardware.com>

Product



高品质 High Quality 高精度 High Precision

H59黄铜垫圈 CNC走心机加工垫圈

H59 Brass Swiss Turning Washer

表面处理: 光滑无毛刺

Surface Treatment: Deburr Ra1.6



应用 / Application

电子设备 Electronic Equipment 高要求品质 High Quality Product 公差 Tolerance ISO2768-mk

<https://www.pshardware.com>



高品质 High Quality 高精度 High Precision

铝合金CNC数控车铣连接杆 Aluminium CNC Turning thread shaft

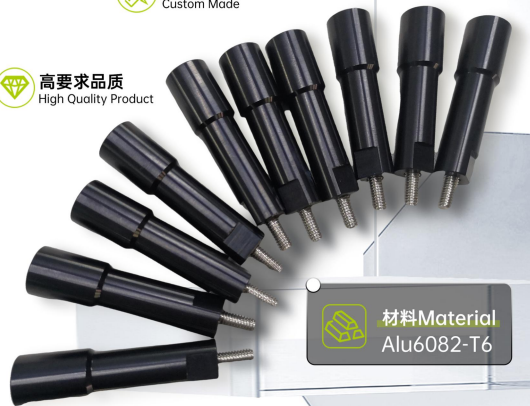
表面处理: 氧化黑色

Surface Treatment: Black Anodizing

定制加工 Custom Made

应用: 电气设备 Application: Electronic Equipment

高要求品质 High Quality Product



材料 Material Alu6082-T6

公差 Tolerance ISO2768-mk

<https://www.pshardware.com>



高品质 High Quality 高精度 High Precision

不锈钢304螺杆 CNC数控车加工螺杆

Stainless steel SUS304 thread Pin
Swiss Turning custom made Screw

表面处理: 光滑无毛刺

Surface Treatment: Deburr Ra1.6



应用 / Application

半导体设备 Semiconductor Equipment 高要求品质 High Quality Product 公差 Tolerance ISO2768-mk

<https://www.pshardware.com>



高品质 High Quality 高精度 High Precision

铝合金CNC数控加工 菠萝花旋钮

Precision Aluminium CNC Machining Knob

表面处理: 氧化黑色

Surface Treatment: Black Anodize



材料 Material Alu6061-T6

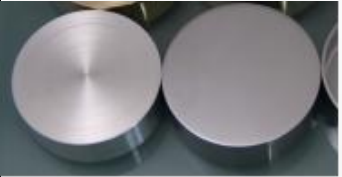


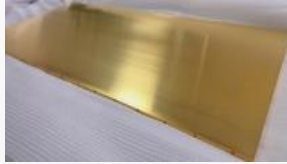








应用: 汽车 Application: Automotive

定制加工 Custom Made 高要求品质 High Quality Product 公差 Tolerance ISO2768-mk

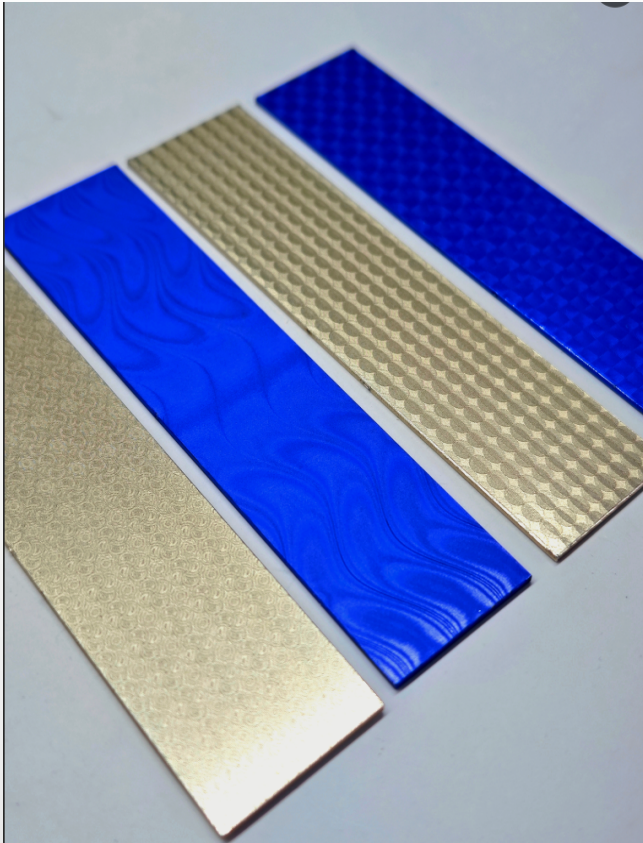
<https://www.pshardware.com>

Main Surface Treatment for Metal parts

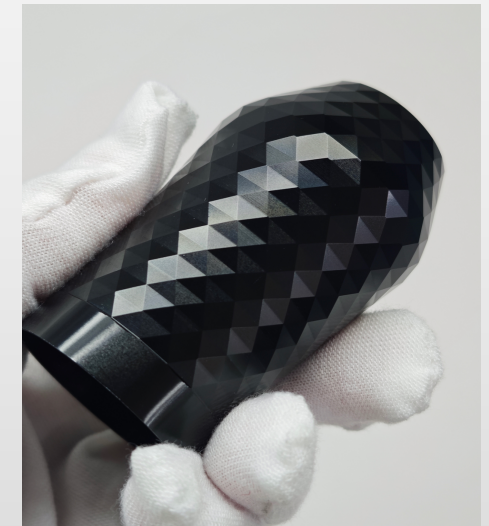
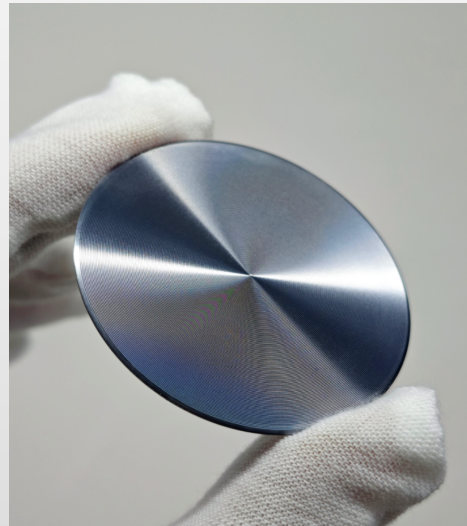
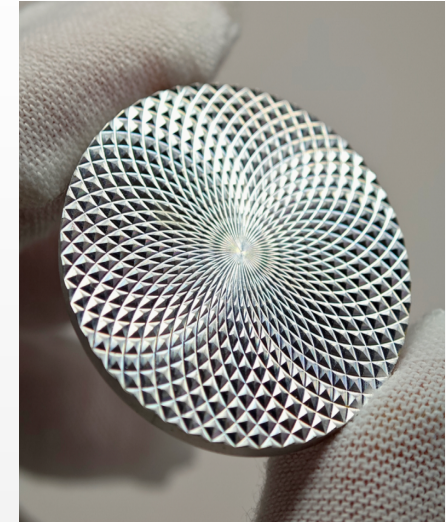
Raw Material	本色氧化 Natural Anodized	黑色氧化 Black Anodized	红色氧化 Red Anodized	氧化亮光 Brill Anodized	金色氧化 Gold Anodized	蓝色氧化 Blue Anodized
铝合金2024, 2017, 5754, 5083, 6061, 6063, 6082, 7075, Aluminium 2024, 2017, 5754, 5083, 6061, 6063, 6082, 7075,						
	粉色和玫瑰金氧化 Pick & Rose Gold Anodized	白色喷漆 White Painted	红色和玫瑰金氧化 Red & Rose Gold Anodized	白色和黑色喷塑 White & Black Rubber painted	电镀玫瑰金 Rose Gold Electro Plated	灰色50µm硬质氧化 Grey 50 µm Hard Anodized
						

Raw Material	化学镀镍 Chemical Nickel Plated	黑色喷漆 Black Painted	电镀哑铬 Satin Chrome Plated	电镀24K金 24K Gold Plated	电镀铬色 Chrome Plated	电镀枪色 Gun metal plated
红铜, 黄铜类 Copper T2, Brass CuZn39Pb2, CuZn40Pb3						
铁, 合金钢, 不锈钢类 Iron, Alloy Steel, Stainless Steel,	铁件发黑 Black Oxidize (Steel item only) 	电镀彩锌 Yellow Zinc-Plated 	拉丝 (不锈钢) Brush (Stainless Steel) 	镜光 (不锈钢) High Polish (Stainless Steel) 	镀蓝锌 Blue Zinc Plated 	电解抛光 (不锈钢) Electro Polishing (Stainless steel) 

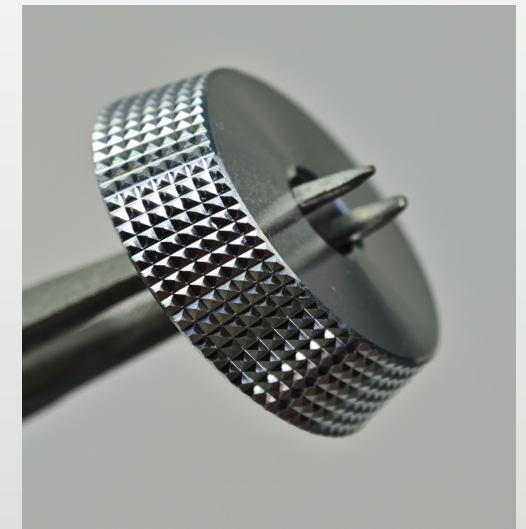
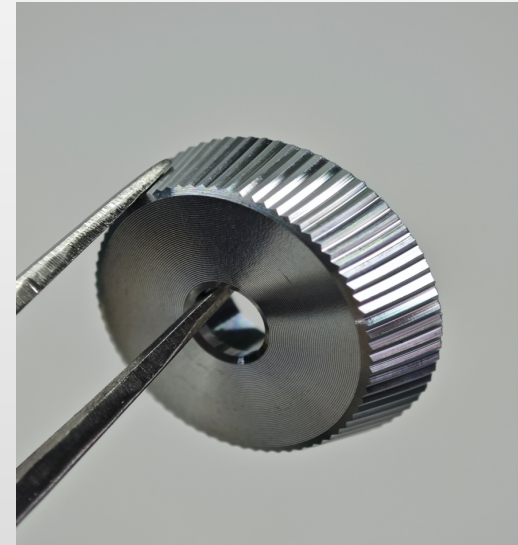
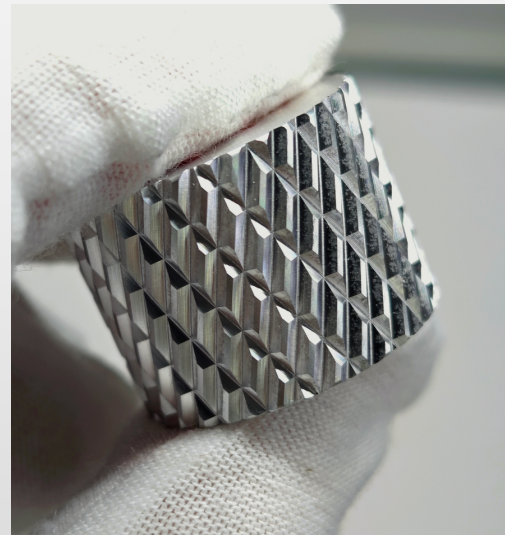
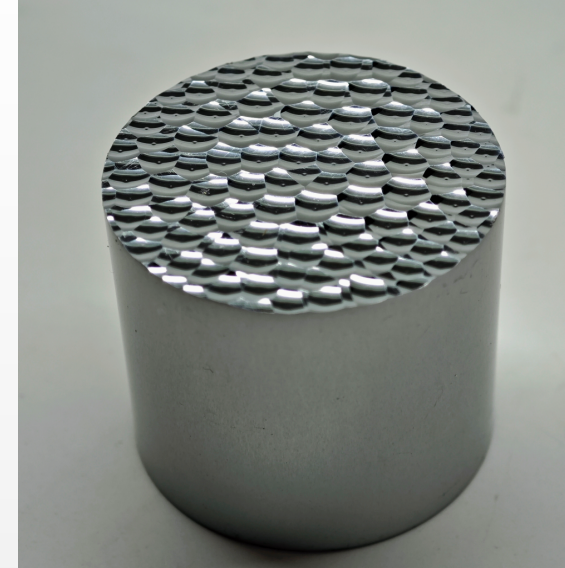
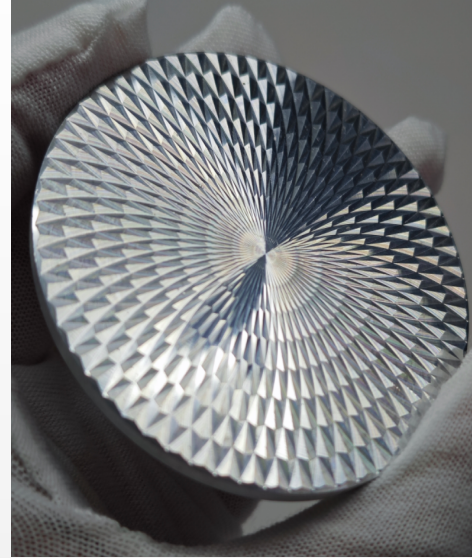
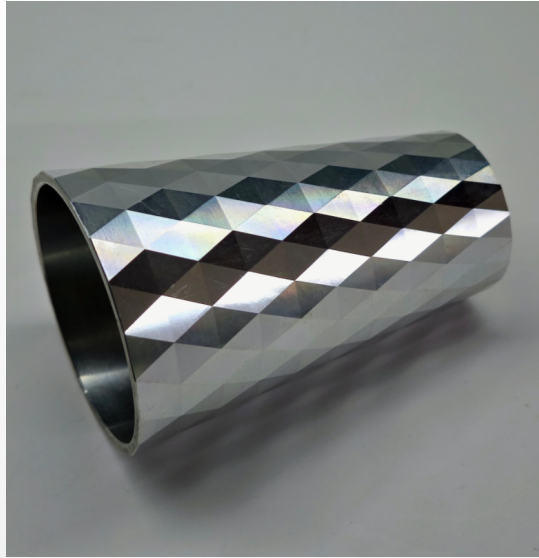
Knurling & Pattern



Knurling & Pattern



Knurling & Pattern



OUR CUSTOMERS

 EUREKA DAGESH
Challenging your vision P
PODBIKE PRIMALUCE
LAB GOLDMUND
SWISS MADE KLA+
Keep Looking Ahead In-Situ Inc. QUISS CONTELEC SAMSON KRONES METHODE
ELECTRONICS ATIK
CAMERAS LAB
MOTION SYSTEMS



THANK YOU!

